

Disclaimer: The brochure is purely conceptual and not a legal offering. All images and plans in the brochure are artist's impressions and Promoters / Architects reserve the right to add/delete details / specifications / elevations mentioned. Terms and conditions apply. The images shown are for illustrative purpose.

# Location Map



## DISTANCE ADVANTAGES :

- 11 km. from Airport
- 11 km. from Charbagh Railway Station
- 01 km. from PGI Trauma Centre
- 2.5 km. from Amar Shaheed Path
- Near proposed Metro Station



### RAM CHANDER BUILDERS (P) LTD.

(An ISO 9001:2008 Certified Company)  
Shiva Greens, Sector-14, Vrindavan Yojna, Raebareli Road, Lucknow  
#FOR ASSISTANCE CALL +91 8172880011  
E-mail : info@rcbgroup.co.in, sales@rcbgroup.co.in

[www.rcbgroup.co.in](http://www.rcbgroup.co.in)



Designed by - Sparsh Graphix (09936426342) Printed by - Peepal Comm (09873887750)



COME HOME WITH A SMILE







### Luxurious home to suite your lifestyle

Welcome to Shiva Greens, premium luxury condos offering an exceptionally fine living. This is where sophistication meets the best of both worlds to give the creme de la creme, a dwelling as supreme as their stature. Located at Lucknow's most prestigious address, Sector-14, Vrindavan Yojna, it has some absolutely fantastic 2 BHK and 3 BHK+ options surrounded with unique facilities. Shiva Greens comes to you from a constellation of top-notch, architects, interior designers, landscape and lighting experts. A reflection of elite tastes, Shiva Greens is truly, an exclusive address! Shiva Greens, the new address for impressive lifestyle awaits you...

Modern life,  
with a touch of style.



### That's True luxury

Shiva Greens, the new address for impressive lifestyle awaits you...it is a place that can be vouched as perfect confluence of simplicity, natural eminently, lush green landscape and bring to you glorious towers of lavish apartments. Close your eyes and visualize an expanse of lush green, the freshness of luxuriant vegetation and the joys of naturally beautiful environs. Now open your eyes to discover villas that transcend all know concepts of fine urban dwellings.





Cluster Plan



Fascinating features  
fantastic lifestyle

- Well equipped clubhouse with wading pool
- Well designed road network
- Main park with jogging track
- Play area for kids and a variety

FLOOR PLAN  
2nd to 7th Floor

Typical Floor Plan



FLOOR PLAN  
2nd to 7th Floor

3 BHK | Type B | Super Area : 1668 sq.ft.  
Carpet Area : 1120 sq.ft.  
Balcony : 98 sq.ft.

Typical Floor Plan



FLOOR PLAN  
2nd to 7th Floor

3 BHK | Type C | Super Area : 1482 sq.ft.  
Carpet Area : 998 sq.ft.  
Balcony : 84 sq.ft.

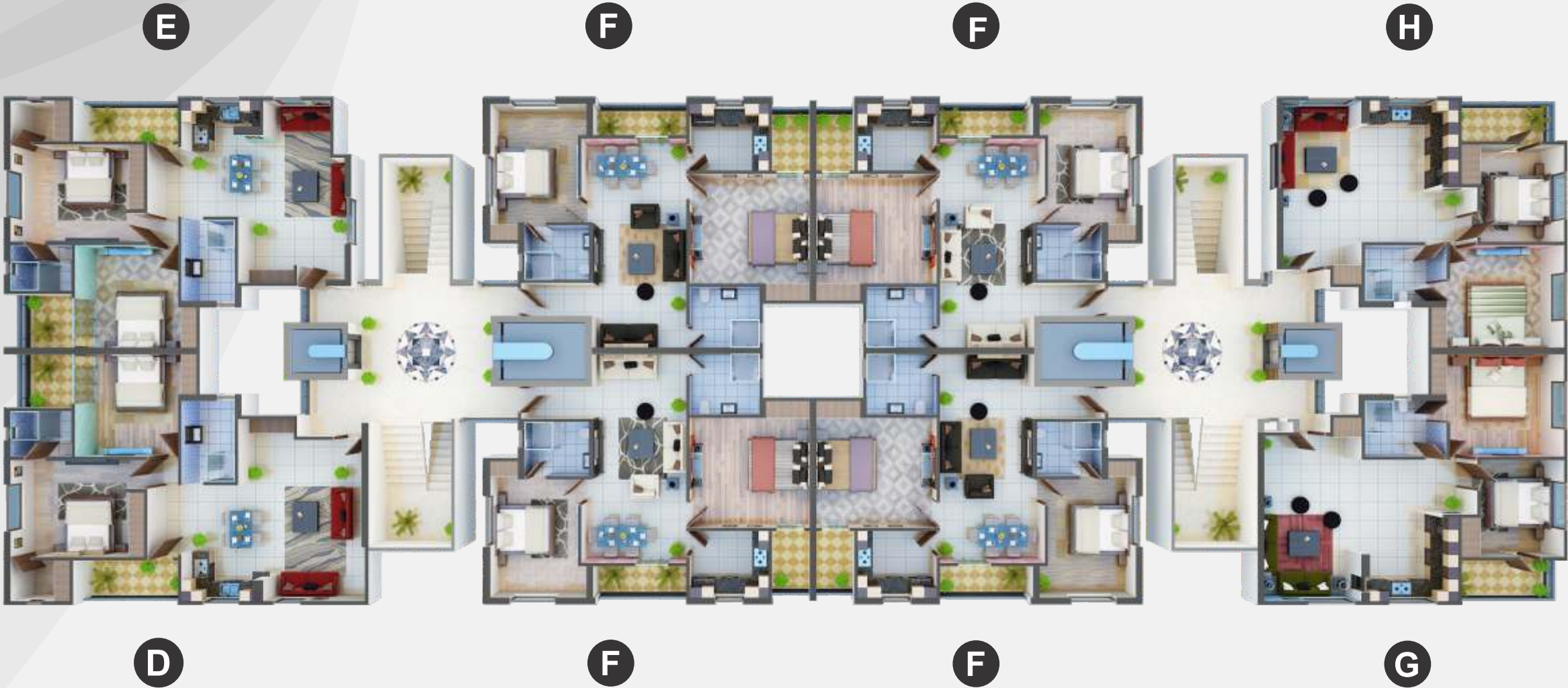
\*1m<sup>2</sup>= 10.764 sq.ft.



# Life style unlike any other

At Shiva Greens, the natural harmony of the environment is preserved to an extent possible. Special care has been taken to create the exterior ambience of the apartments. Contemporary architecture creates an aura of relaxed atmosphere and serenity. Round the clock security, luxurious club, and well maintained walks and parks make the complex a true heaven. No where had peace and convenience been in such harmony.

## FLOOR PLAN 9th to 11th Floor



FLOOR PLAN

9th to 11th Floor

2 BHK | Type E | Super Area : 1358 sq.ft.  
Carpet Area : 882 sq.ft.  
Balcony :110 sq.ft.



FLOOR PLAN

9th to 11th Floor

2 BHK | Type F | Super Area : 1253 sq.ft.  
Carpet Area : 842 sq.ft.  
Balcony :73 sq.ft.

\*1m²= 10.764 sq.ft.